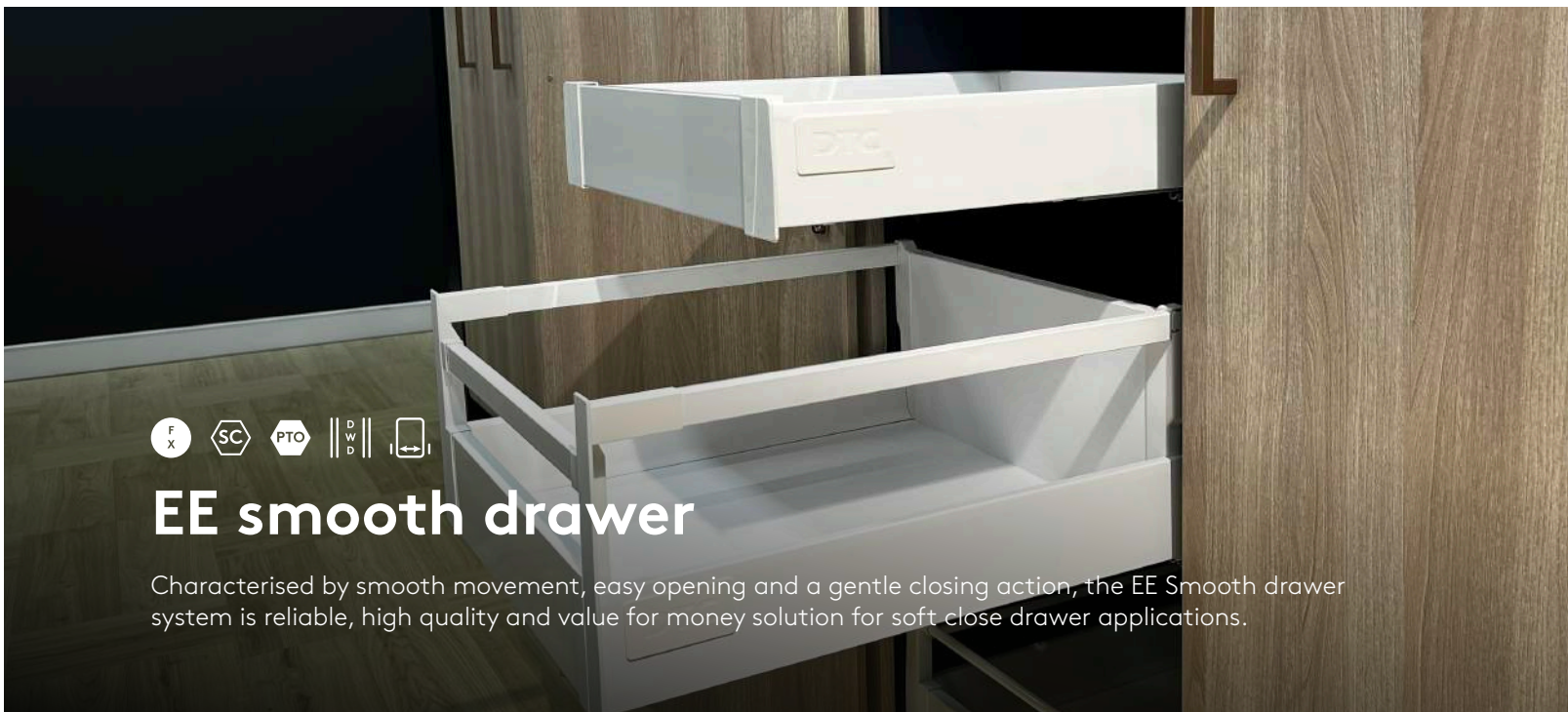


look inside



nikpol[™]

EE Smooth Drawer
Installation Instruction



EE smooth drawer

Characterised by smooth movement, easy opening and a gentle closing action, the EE Smooth drawer system is reliable, high quality and value for money solution for soft close drawer applications.

This drawer system is available in silk white finish with sleek and modern profiles and matching square gallery rails for pot drawers. Incorporating a built-in soft closing mechanism in fully synchronised runners, it ensures a quiet closing experience, eliminating any knocking noise. The drawers offer 2D adjustment for standard models (side and height), and pot drawers provide 3D adjustment (side, height, and the tilt adjustment through the gallery rail), enhancing customization options.

specifications:

Finish: White

Load capacity: 40kg

Benefit: Optimal soft closing operation

Extention: Full extension synchronised drawer

Ease-of-use: Tool-free removal of drawer from the runner

Type: Double wall drawer

Adjustment (Up/Down): ± 2 mm

Adjustment (Left/Right): ± 1.5 mm

Option: Push to open available

nominal length	soft closing				push-to-open runner only
	profile		medium	high pot drawer	must add to complete drawer
	68mm set A	83mm set A	135mm set B	199mm set D	
270mm		EE01270A			
300mm		EE01300A			
350mm		EE01350A	Use Set B components	Use Set D components	EE0513504H
400mm		EE01400A	Use Set B components	Use Set D components	EE0514004H
450mm		EE01450A	Use Set B components	Use Set D components	EE0514504H
500mm	EE005004A	EE01500A	EE01500BB	EE01500DD	EE0515004H
550mm		EE01550A	Use Set B components	Use Set D components	

Set A - Comes complete drawer with expanding dowel front brackets.

Set B - Set A (83mm) plus knock-in square gallery rails & medium back brackets.

Set D - Set A (83mm) plus knock-in square gallery rails & high back brackets.

*Synchronisation Rod(M0FH02) is needed for Push-to-Open drawers with width of 600mm or wider for mechanism to work.

accessories:



White Knock-In Round Gallery Rail Set

Code	Size
EE01041350	350mm
EE01041400	400mm
EE01041450	450mm
EE01041500	500mm
EE01041550	550mm



White Knock-In Square Gallery Rail Set

Code	Size
EE0104S350	350mm
EE0104S400	400mm
EE0104S450	450mm
EE0104S500	500mm
EE0104S550	550mm



Rail Fixing Bracket Set

Code	Specification
MGH08	Screw-on fixing bracket. Suits knock-in gallery rails only.



Front Fixing Bracket Set

Code	Specification
EE0101B	Expanding Dowel



Rear Bracket Set - White

Code	Specification
EE01031	H83 Std - A
EE01032	H135 Med Pot - B
EE01033	H199 High Pot 2x Rail-D
EE01039	H199 High Pot Rail-D



Inset Front Bracket Set - White

Code	Specification
EE01012	H83 Std
EE01013	H135 Med Pot Round Rail
EE01015	H199 High Pot Round Rail
EE0101K	H135 Med Pot Square Rail
EE0101C	H199 High Pot SquareRail



1100mm White Front Panel

Code	Size
EE01021	83mm high



Inset Drawer Handle

Code	Specification
M01022	For high inset drawer



1100mm White Front Rail

Code	Specification
EE01043	Round rail for high inset drawer
M01078	Square rail for high inset drawer

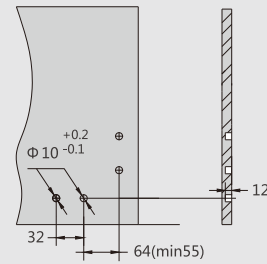
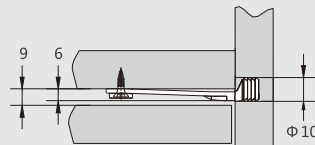
accessories:



Drawer Front Stabiliser

Code	Size
M01082	White

Drawer front drilling



Rear Stabiliser

Code	Colour
B01081	White



Rear Variable Brackets

Code	Size
B0103J	White



Synchronisation Rod

Code	Size
M0FH02	PTO rod 1100mm



Front Universal Marking Jig

Code	Specification
DTC05	Front universal marking jig



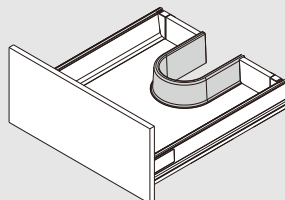
Cover caps

Code	Colour
MJS01	White

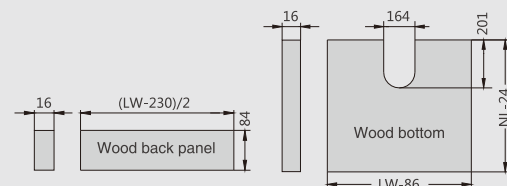


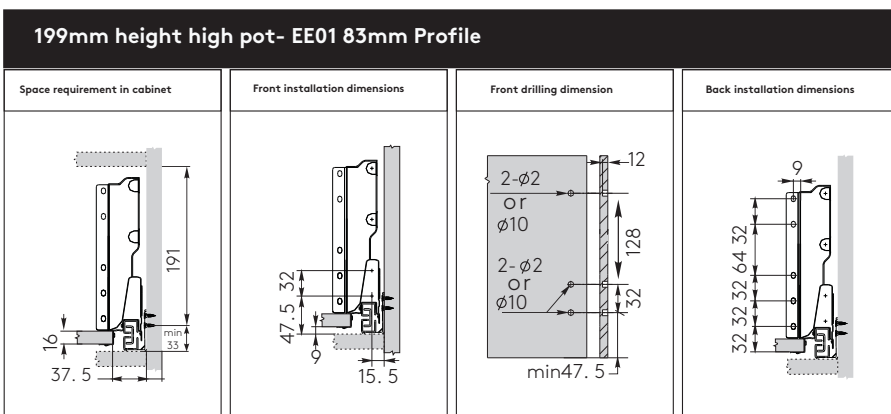
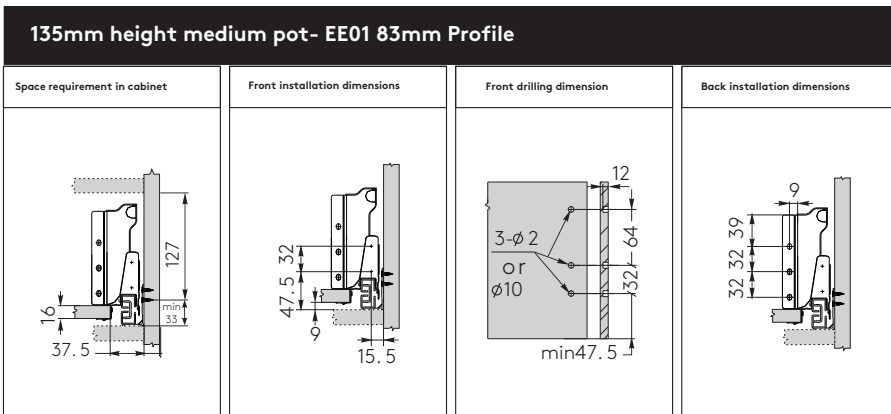
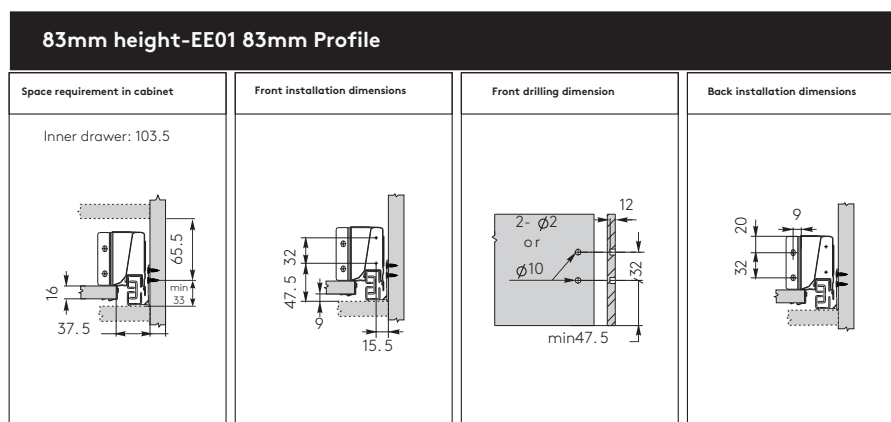
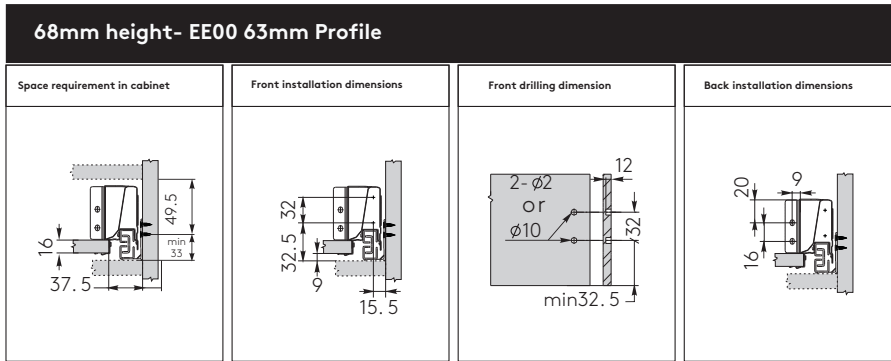
Sinks/Vanity Drawer Wall

Code	Specification
M0103M	U-Shaped

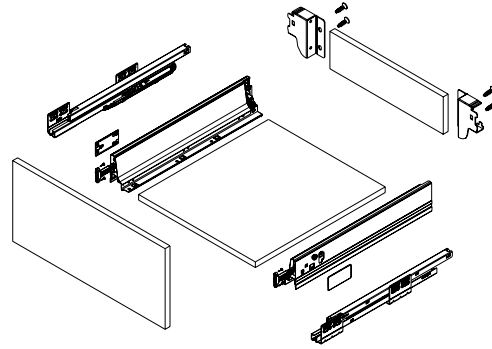
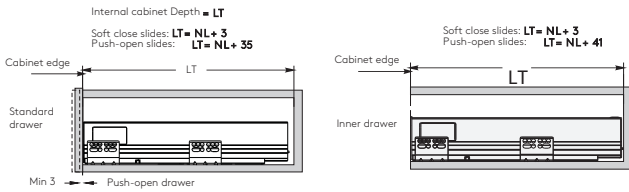


Drawer Back and Bottom Dimensions

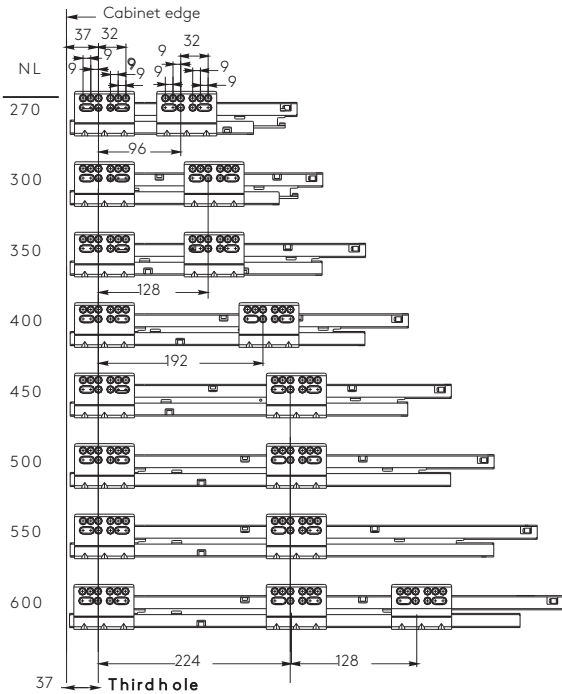




Installation dimensions

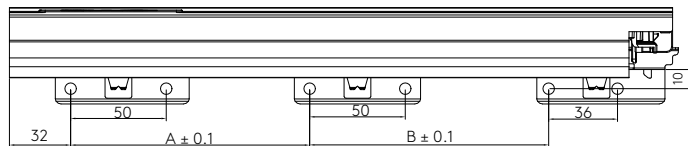


Screw position of the slides (mm)

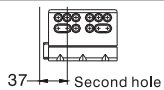


Bottom panel pre-drilling

NL	A	B
270	85	85
300	100	100
350	125	125
400	150	150
450	175	175
500	200	200
550	225	225

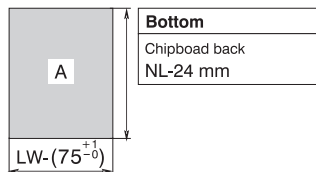
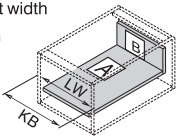


Fixing hole position for push-open inner drawer



Cutting dimensions for 16mm chipboard

KB: Cabinet width
 LW: Internal cabinet width
 NL: Nominal length



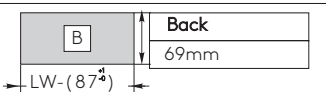
Inner panel and Inner rail cutting dimension

	EE01021	White	* Front Panel For cutting to size: 1100mm Cutting: Internal cabinet width LW-97
	EE01043	White	* Front Rail For cutting to size: 1100mm Cutting: Internal cabinet width LW-74
	MO1078	White	<small>* Offcuts are reusable</small>

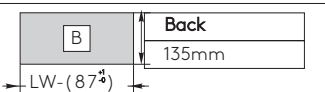
Cutting dimensions for Push-open synchronisation rod (mm)



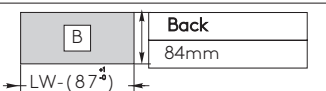
EE00 Drawer- 68mm height



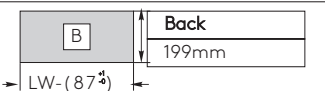
EE01 Drawer- 135mm height



EE01 Drawer- 83mm height



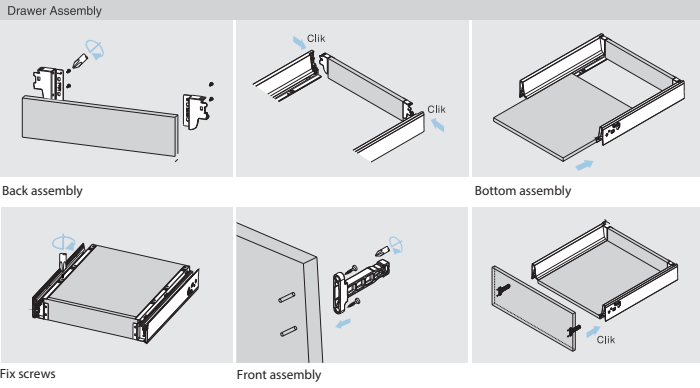
EE01 Drawer- 199mm height



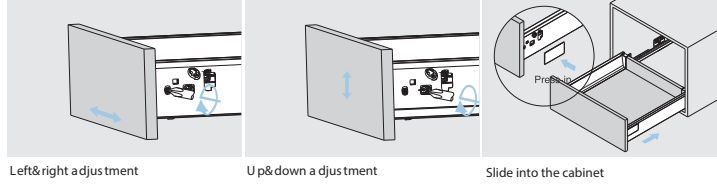
DTC SMOOTH INSTALLATION



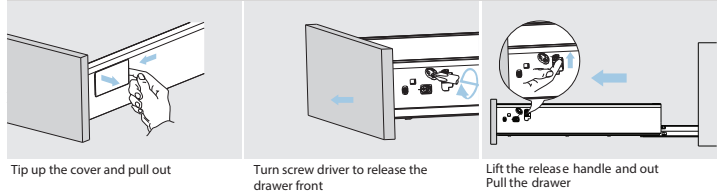
Installation Instruction



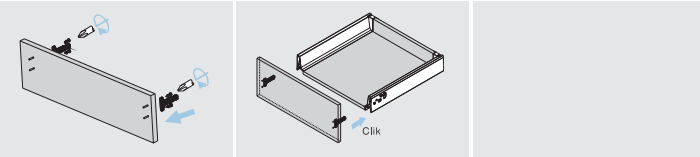
Adjustment



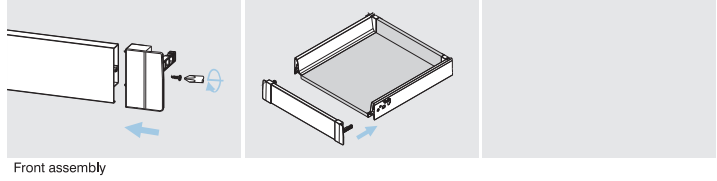
Removal



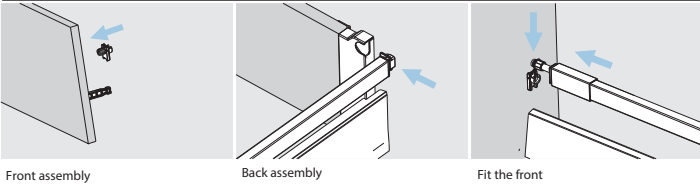
Standard Drawer- 68 & 83 mm (EE00 & EE01 series)



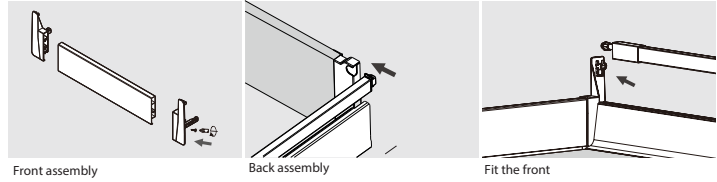
Standard Drawer Inner Drawer Installation



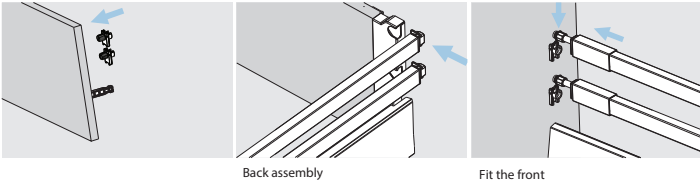
Medium Pot Drawer- 135 mm (EE01 series)



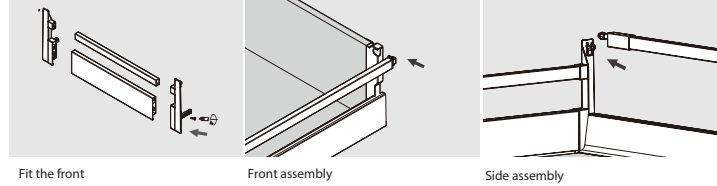
Medium Pot Inner Drawer Installation



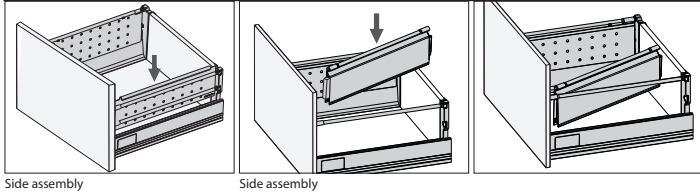
High Pot Drawer- 199 mm (EE01 series) with double gallery rail option



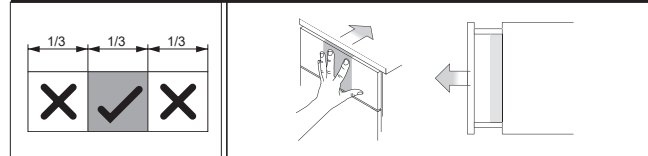
High Pot Inner Drawer Installation with double box side



High Pot Drawer Installation with side wings



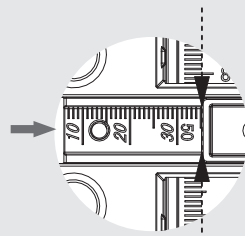
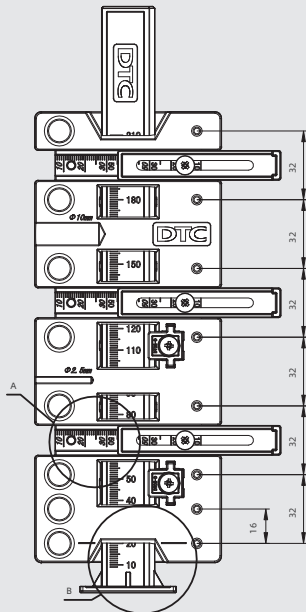
Push to open trigger range



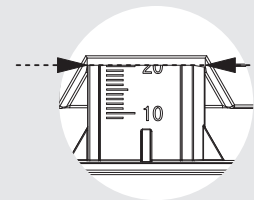
DTC05 UNIVERSAL MARKING TEMPLATE FOR DRAWER



Installation dimension of $\Phi 2.5\text{mm}$ drilling template (mm)



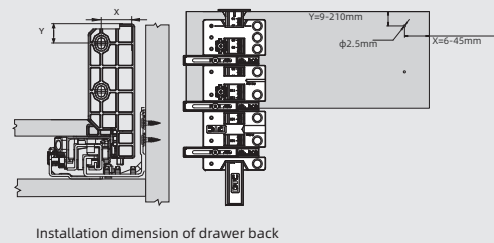
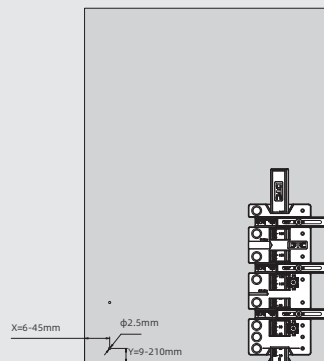
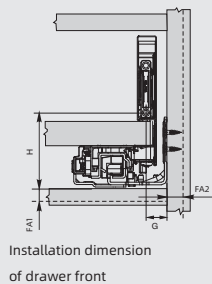
A
Dimension from above
image: 35mm



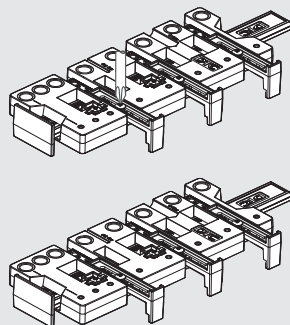
B
Dimension from above
image: 20mm

Installation example of drawer front and drawer back

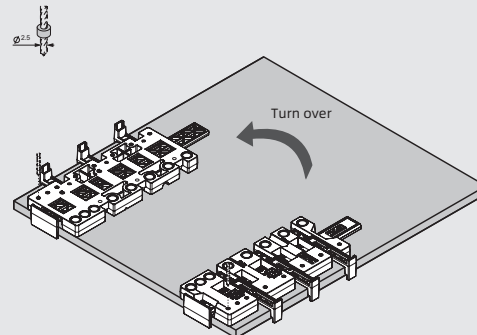
Fa1 = Drawer front overlay of the bottom panel
FA2 = Drawer front overlay of the side panel $Y=H+FA1$
 $X=G+FA2$



Installation example of $\Phi 2.5\text{mm}$ drilling template



Loosen the screws, and adjust the scale "Y" and "X" according to the actual installation dimension, and then fasten the screws.

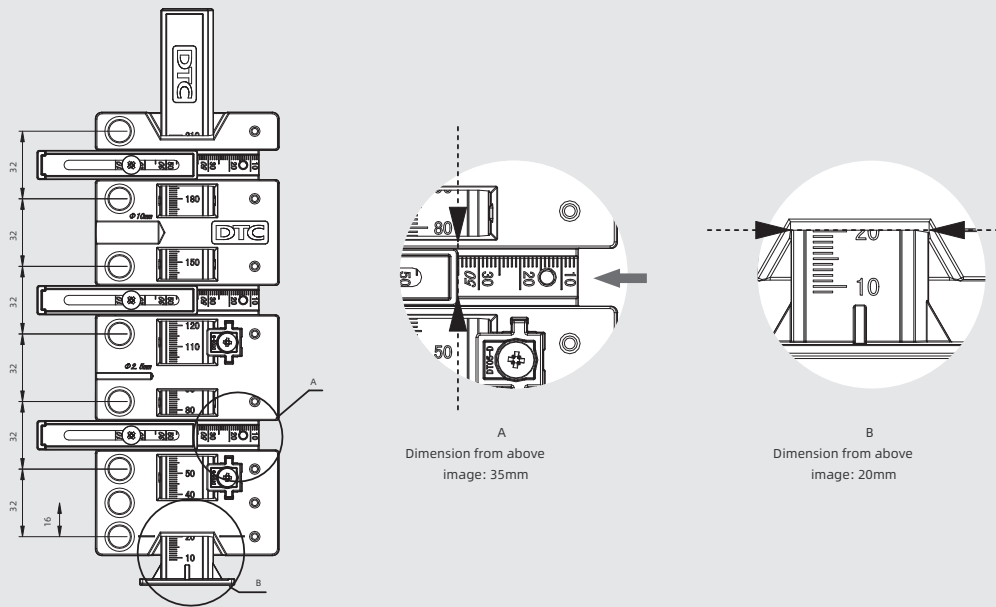


Pre-drill with $\Phi 2.5\text{mm}$ drill bit

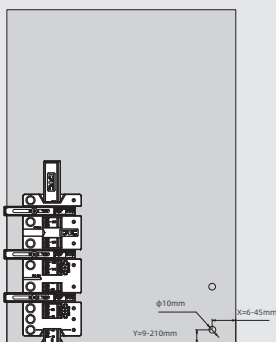
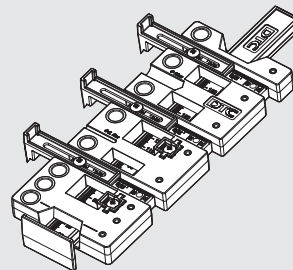
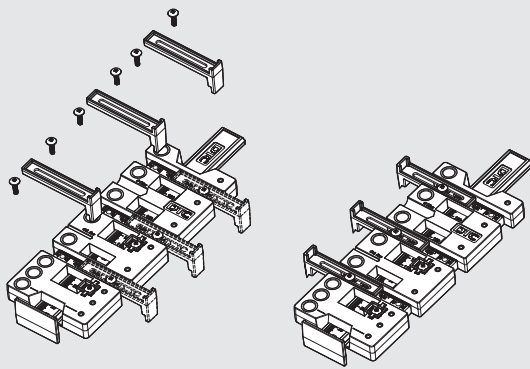
DTC05 UNIVERSAL MARKING TEMPLATE FOR DRAWER



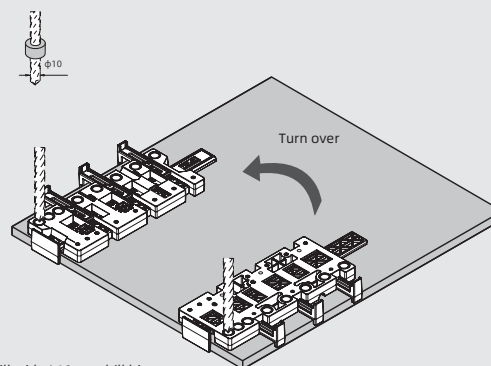
Installation dimension of $\Phi 10$ mm drilling template (mm)



Installation example of $\Phi 10$ mm drilling template



Loosen the screws, and adjust the scale "Y" and "X" according to the actual installation dimension, and then fasten the screws.



Pre-drill with $\Phi 10$ mm drill bit