



DRAGONPRO

- Load capacity 40kg
- Matt black or silk white finish
- Full extension synchronised drawer
- Tool-free assembly and removal
- Soft-close drawer system
- Up/down adjustment ± 2 mm
- Left/right adjustment ± 1.5 mm
- Easy slide in and click back brackets
- No gallery rail — clean, one piece, complete side
- Double wall drawer
- Push-to-open option available

features

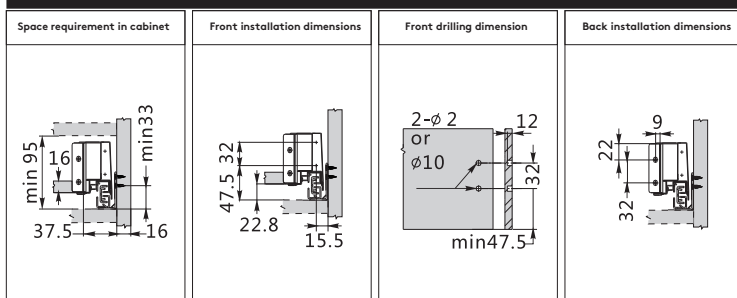


advantages

- No need to construct drawer sides and tool-free assembly and removal makes building a drawer quick and easy
- Runners and slides are hidden and no gallery rails makes the drawer look cleaner
- Internal left/right adjustment
- Built in soft closing mechanism
- Stylish colours — comes in matt black and silk white

Nominal Length	Standard Drawer Silk White Finish					Standard Drawer Matt Black Finish				
	80 mm	95 mm	127 mm	178 mm	238mm	80 mm	95 mm	127 mm	178 mm	238mm
300mm		B013004A	B023004A	B033004A			B013004AMB			
350mm		B013504A	B023504A	B033504A	B043504A		B013504AMB	B023504AMB	B033504AMB	B043504AMB
400mm		B014004A	B024004A	B034004A	B044004A		B014004AMB	B024004AMB	B034004AMB	B044004AMB
450mm		B014504A	B024504A	B034504A	B044504A		B014504AMB	B024504AMB	B034504AMB	B044504AMB
500mm	B05004A	B015004A	B025004A	B035004A	B044004A	B005004AMB	B015004AMB	B025004AMB	B035004AMB	B045004AMB
550mm		B015504A	B025504A	B035504A	B044504A		B015504AMB	B025504AMB	B035504AMB	B045504AMB

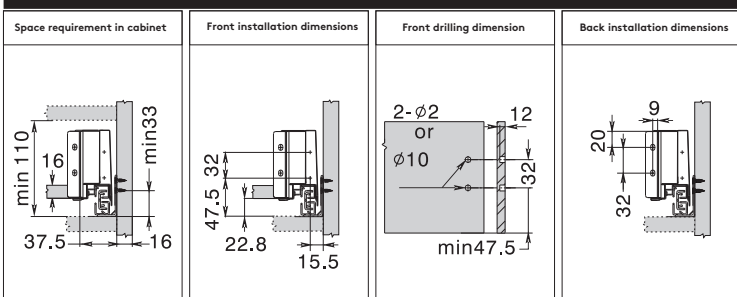
Dragonpro 80mm profile



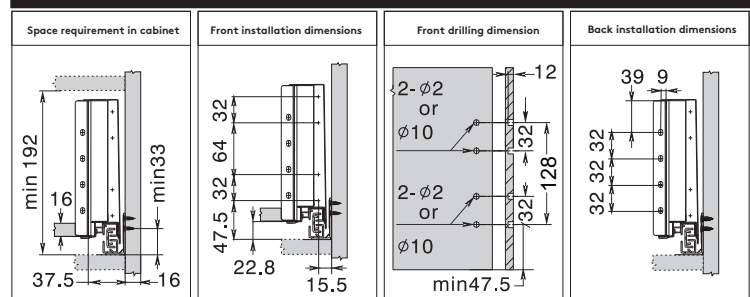
Nominal Length	PTO (Slides Only)
300mm	B413004H
350mm	B413504H
400mm	B414004H
450mm	B414504H
500mm	B415004H
550mm	

*Synchronisation Rod(M0FH02) is needed for drawers with width of 600mm or wider for Push-to-Open mechanism to work.

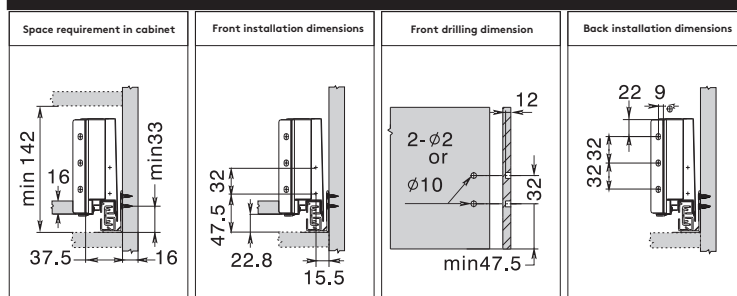
Dragonpro 95mm profile



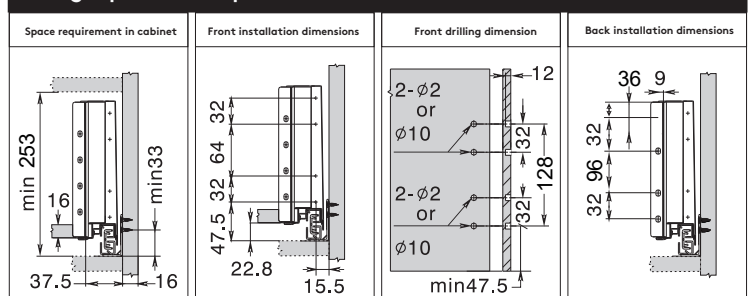
Dragonpro 178mm profile



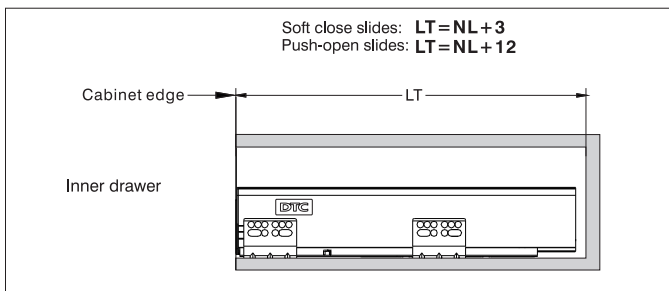
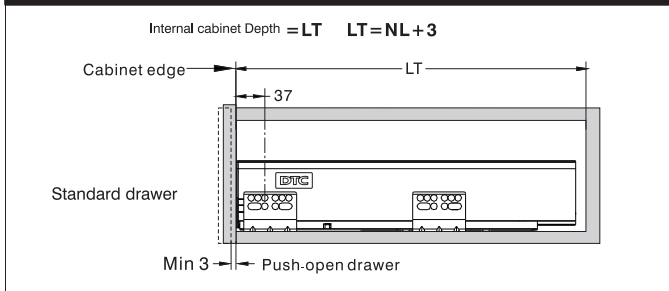
Dragonpro 127mm profile



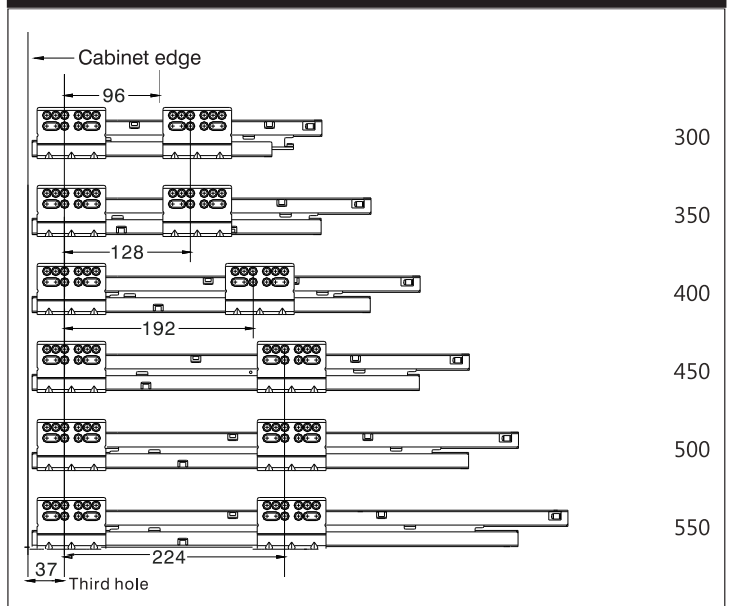
Dragonpro 238mm profile



Installation dimensions

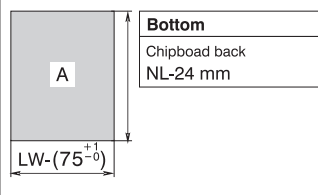
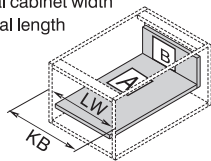


Screw position of the slides (mm)

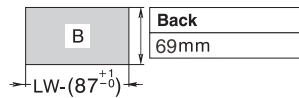


Cutting dimensions for 16mm chipboard

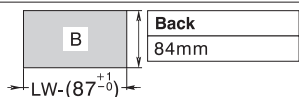
KB: Cabinet width
LW: Internal cabinet width
NL: Nominal length



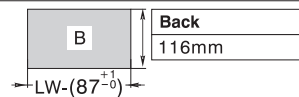
Dragonpro 80mm profile



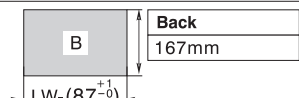
Dragonpro 95mm profile



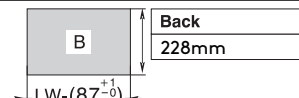
Dragonpro 127mm profile



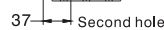
Dragonpro 178mm profile



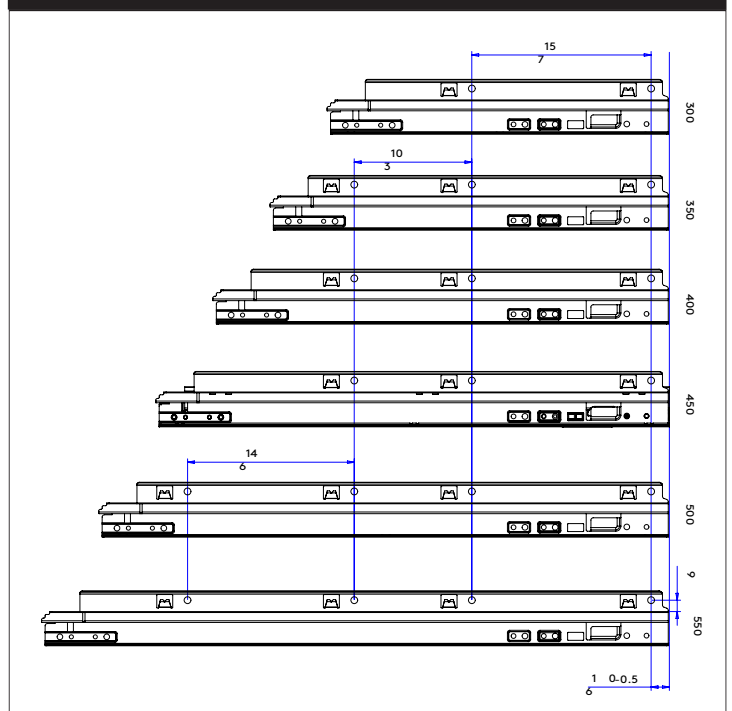
Dragonpro 238mm profile



Fixing hole position for push-open inner drawer



Bottom panel pre-drilling



Inner panel and Inner rail cutting dimension



B01021	White
B01021MB	Matt Black

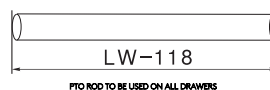
Front Section
For cutting to size: 1054mm
Cutting: Internal cabinet width LW-97



M01078	White
M01078MB	Matt Black

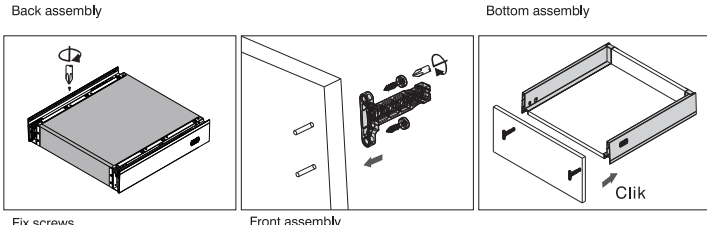
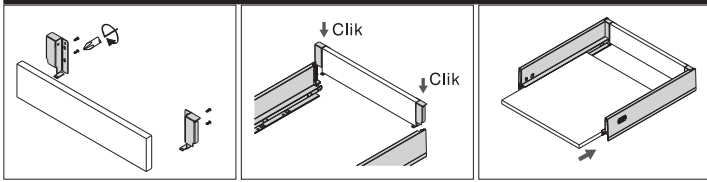
Cross square rail
For cutting to size: 1100mm
Cutting: Internal cabinet width LW-74

Cutting dimensions for Push-open synchronisation rod (mm)

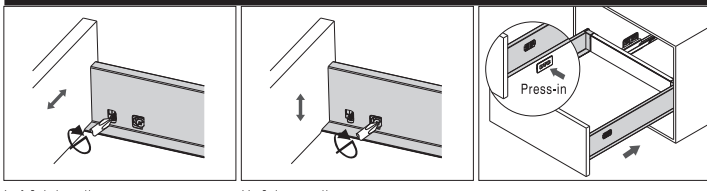


*Rod is not applicable in NL 250 / 270 / 300mm

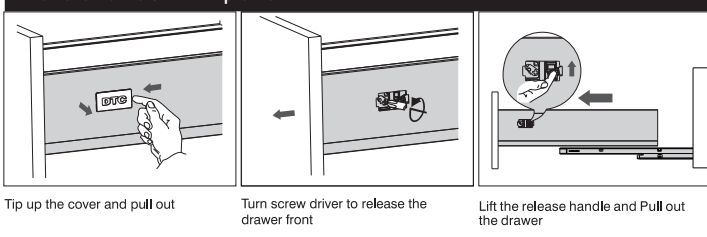
Installation Instruction for 95 & 127mm profile



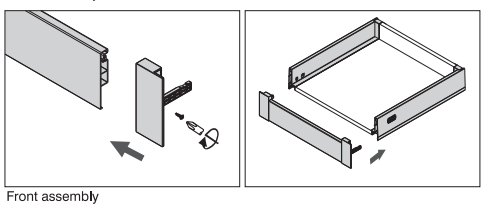
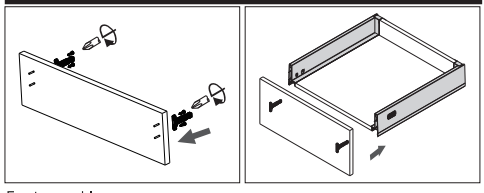
Adjustment for 95 & 127mm profile



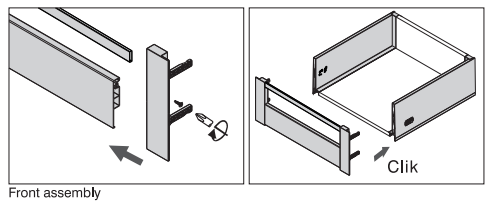
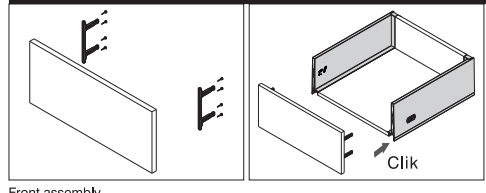
Removal for 95 & 127mm profile



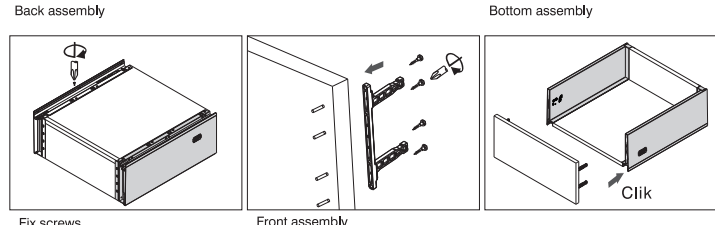
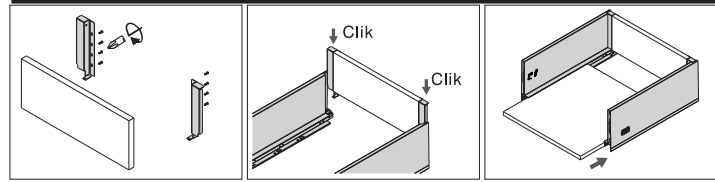
Inner Drawer Installation for 95 & 127mm profile



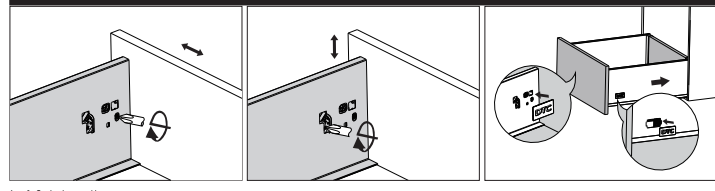
Inner Drawer Installation for 178mm profile



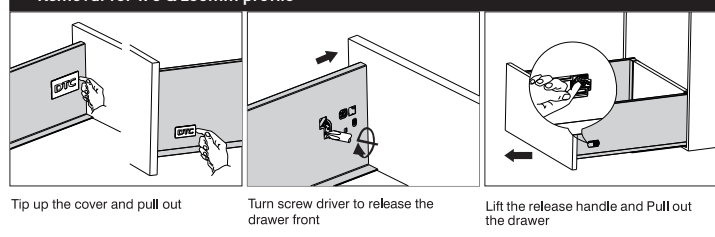
Installation Instruction for 178mm profile



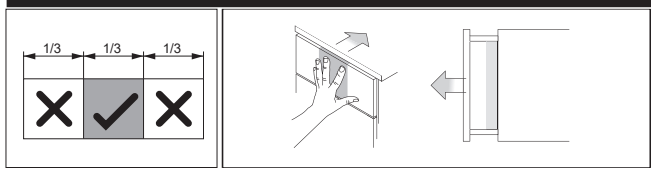
Adjustment for 178 & 238mm profile



Removal for 178 & 238mm profile



Push to open trigger range



Synchronization push-open rod assembly

